




W2P

SOLFLEX

363


The desktop production units!





 **Dimensions:** 15.74 × 15.74 × 21.46 in /
400 x 400 x 545 mm


 **Print Volume:** 3.15 × 5.91 × 5.12 in* /
80 x 150 x 130 mm*

 **Layer Thickness:** 0.001–0.008 in /
25–200 microns


 **Pixel Size:** 0.0025 in* /
63 microns*

 **Technology:** UV-LED DLP®
Wavelength: 385 nm

 **Weight:** approx. 44 lbs /
20 kg

 **Operating Temperature:** 64–82° F /
18–28° C

 **Power Requirements:** 100–240V,
50/60 Hz, 80 W

 **Building Speed:** up to 5.43 in/hr** /
up to 138 mm/hr**

PLUS

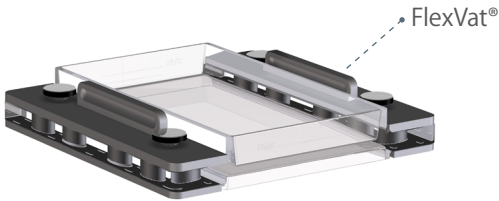
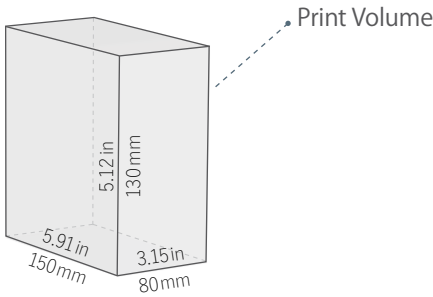
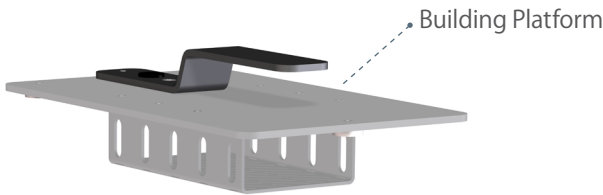
Vat Deflection Feedback System
saves up to 40% of manufacturing time

* Pixel Size and Print Volume may vary

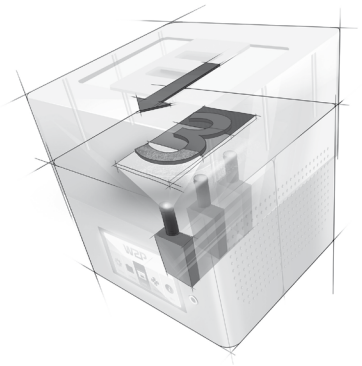
** Layer Thickness: 200 µm, BuildStyle: Normal

W2P

SOLFLEX 363



Moving DLP®



Monotech Systems Limited

+91 99401 85761 | 3dsolutions@monotech.in
www.3dmonotech.in